



At home in Hawai'i

Building the best by land, air and sea.

www.saltchuk.com



Saltchuk's Hawai'i Ohana: A family of transportation companies

At Saltchuk, we oversee some of the country's most respected transportation and distribution companies. Together, we provide essential services to our communities.



Aloha Air Cargo

Hawai'i's largest all-cargo airline provides freight transportation throughout the Hawai'ian Islands and between West Coast destinations.

Aloha Tech Ops

An FAA-certified Part 145 repair station and FAA Safety Management System (SMS) participant, Aloha Tech Ops is a leading provider of aircraft maintenance and repair of commercial aircraft throughout the Hawai'ian Islands.

Foss

Foss offers ship assists, regional towing, barge charters and related marine services throughout the Hawai'ian Islands and into the Pacific.

HFN

Hawaii Fueling Network offers a broad network of automated fueling sites around the islands of Maui and the Big Island.

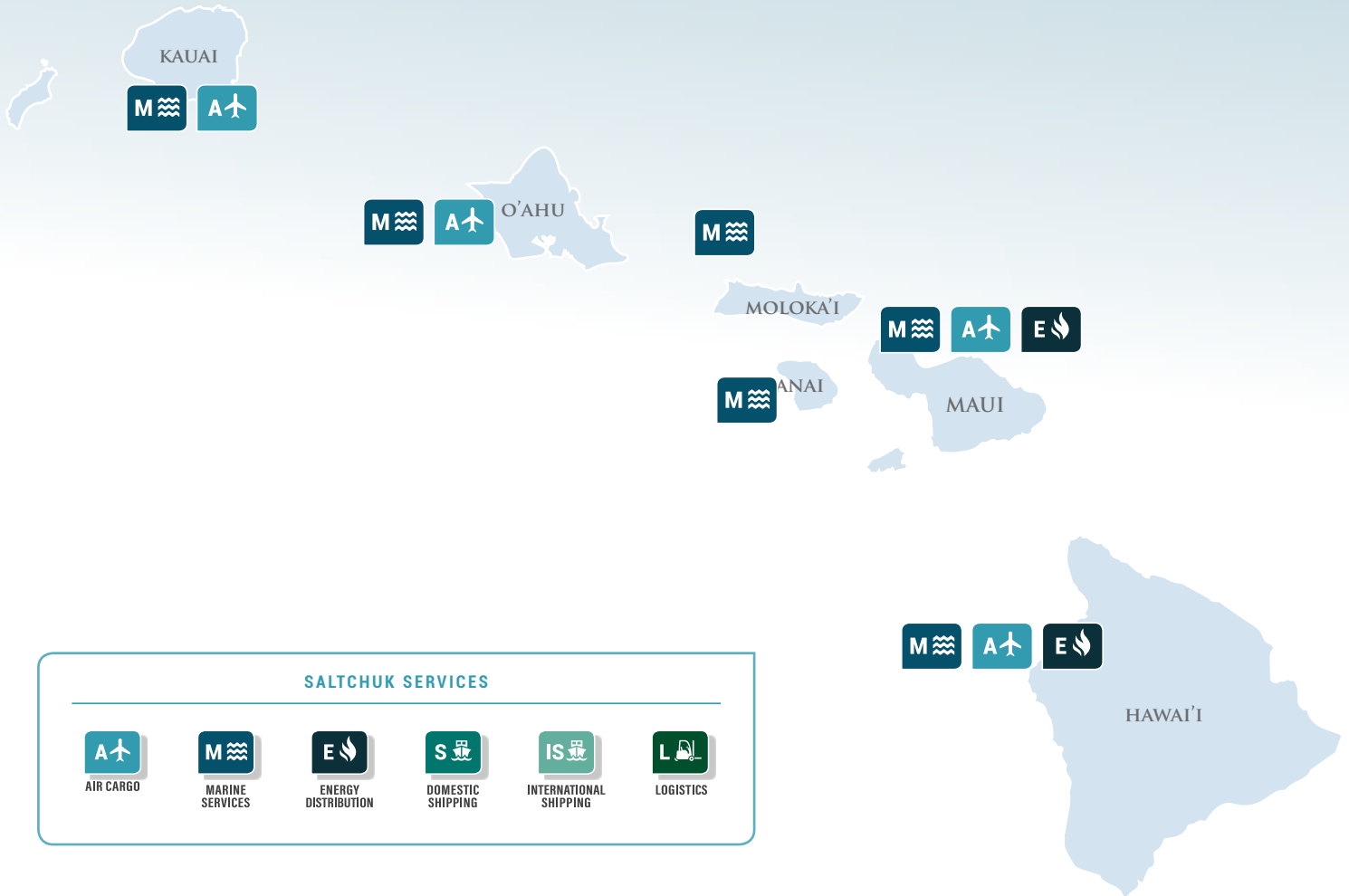
Hawai'i Petroleum

Hawai'i's largest independent marketer of petroleum products provides fuel throughout Maui and the Big Island.

TOTE Services

TOTE Services provides technical ship management and crewing services for more than 30 government, private and commercial vessels throughout the world.

Saltchuk Hawai'i Companies



SALTCHUK SERVICES



AIR CARGO



MARINE SERVICES



ENERGY DISTRIBUTION



DOMESTIC SHIPPING



INTERNATIONAL SHIPPING



LOGISTICS

Ohana Fuels/Minit Stop

The duo offers self-serve gas and food service throughout Maui and the Big Island. Minit Stop is home of the legendary Maui Fried Chicken, selling more than 400,000 pounds annually. As a sister company of Hawaii Petroleum, Minit Stop offers gas redemption to HFN wholesale customers with HFN charge accounts.

Young Brothers

As Hawai'i's leading freight and transportation company, Young Brothers delivers cargo among all major Hawai'ian Islands. The Port of Honolulu is its statewide hub.

→ New Kāpena Class tugs for Young Brothers represent an \$80M investment. The tugs will enter service in 2018.





Connecting Hawai'i

Young Brothers and Aloha Air Cargo connect the islands of Hawai'i providing reliable shipments of everything from groceries to construction supplies. Hawaii Petroleum companies are the leading independent distributors of petroleum products and lubricants on the islands of Maui and Hawai'i.

Saltchuk acquired Young Brothers in 1999 and The Haynes Companies in 2006, expanding into energy distribution on Maui and the Big Island. Then, in 2008, almost entirely due to the personal efforts of Senator Inouye, we were successful

in saving Aloha Airlines' cargo division from the Aloha bankruptcy.

In addition to these acquisitions, our reinvestment has been substantial. Since we acquired Young Brothers we have committed more than five times the original purchase price into new assets for the company

We are very proud of Saltchuk's economic impact in Hawai'i. As of May, 2017, our Hawai'ian subsidiary operating companies employed 1,182 workers in the State.

Environmental Leadership

Saltchuk is committed to operating in a way that minimizes negative impacts on the environment. Our goal is to be an industry leader and innovator in our stewardship of the environment.

Saltchuk is proud of our companies' investments in clean technology and alternative fuels that have set new standards in reducing carbon emissions and improving air quality in the transportation industry.

Code of Ethics

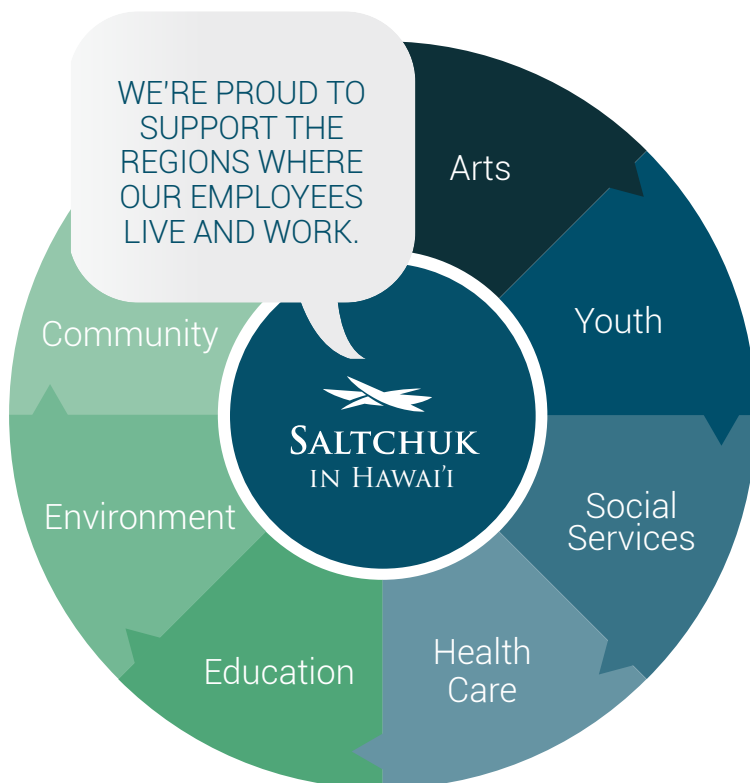
We want Saltchuk companies to be the kind of place where we would all be proud for our children to work. We expect the employees at all of our companies to always be honest and ethical in the performance of their company's business and to meet the highest standards of business behavior. A shared Code of Ethical Business Conduct helps guide our organization.

Giving back to our Hawai'i communities

Saltchuk's Hawai'i companies and employees proudly support their communities by giving time, money and services to organizations and causes that matter to them. In 2012-2016, our Hawai'i companies provided millions in financial and in-kind support to local charities and organizations. One of our proudest accomplishments is sponsoring dozens of neighbor island students so they could receive the Executive MBA from the Shidler College of Business.



Giving back is at the **heart** of what it means to be a Saltchuk company.



Our values

As a family business we are driven by our values and a desire to be the best in our industry. Not the biggest, but the best. Our companies are vital parts of the communities we serve, both urban and rural. Saltchuk's commitment to providing safe and reliable services for generations to come is the reason we invest 90 percent of our profits back in to operations and support our companies as leaders in environmental responsibility and innovation.

We're
driven by
our **values.**



Safety

Nothing is more important than having each and every one of us go home to our families without having been injured at work. We have a goal of zero incidents across all lines of business and aggressively work toward that goal.

Reliability

We take care of our customers, delivering reliable and dependable service. To make this happen, we recruit and employ people who share our values, we continually reinvest in our assets and we work hard to improve our business every day. We conduct business with honesty and integrity.

Commitment

We are committed to our employees, caring for the environment, and being good corporate citizens in the communities we serve. We seek creative opportunities for employee growth and advancement, invest in innovative environmental solutions, and aim to be economic and social assets in every place we operate. Our success depends on the dedication and ingenuity of every Saltchuk employee.



Safety
Reliability
Commitment



alohaaircargo.com



hawaii-petroleum.com



minitstop.com



ohanafuels.com



foss.com



htbyb.com

THE SALTCHUK FAMILY OF COMPANIES

www.saltchuk.com